

# Etude et Réalisations Industrielles Lyonnaise



Family company created in 1984

**23 rue Henri Brosse**

**69310 Pierre-Bénite**

**France**

**Tel : 04.78.53.26.57**

**Fax : 04.72.36.03.18**

**[Eril.lyon@wanadoo.fr](mailto:Eril.lyon@wanadoo.fr)**

**[www.eril.fr](http://www.eril.fr)**



# The activities

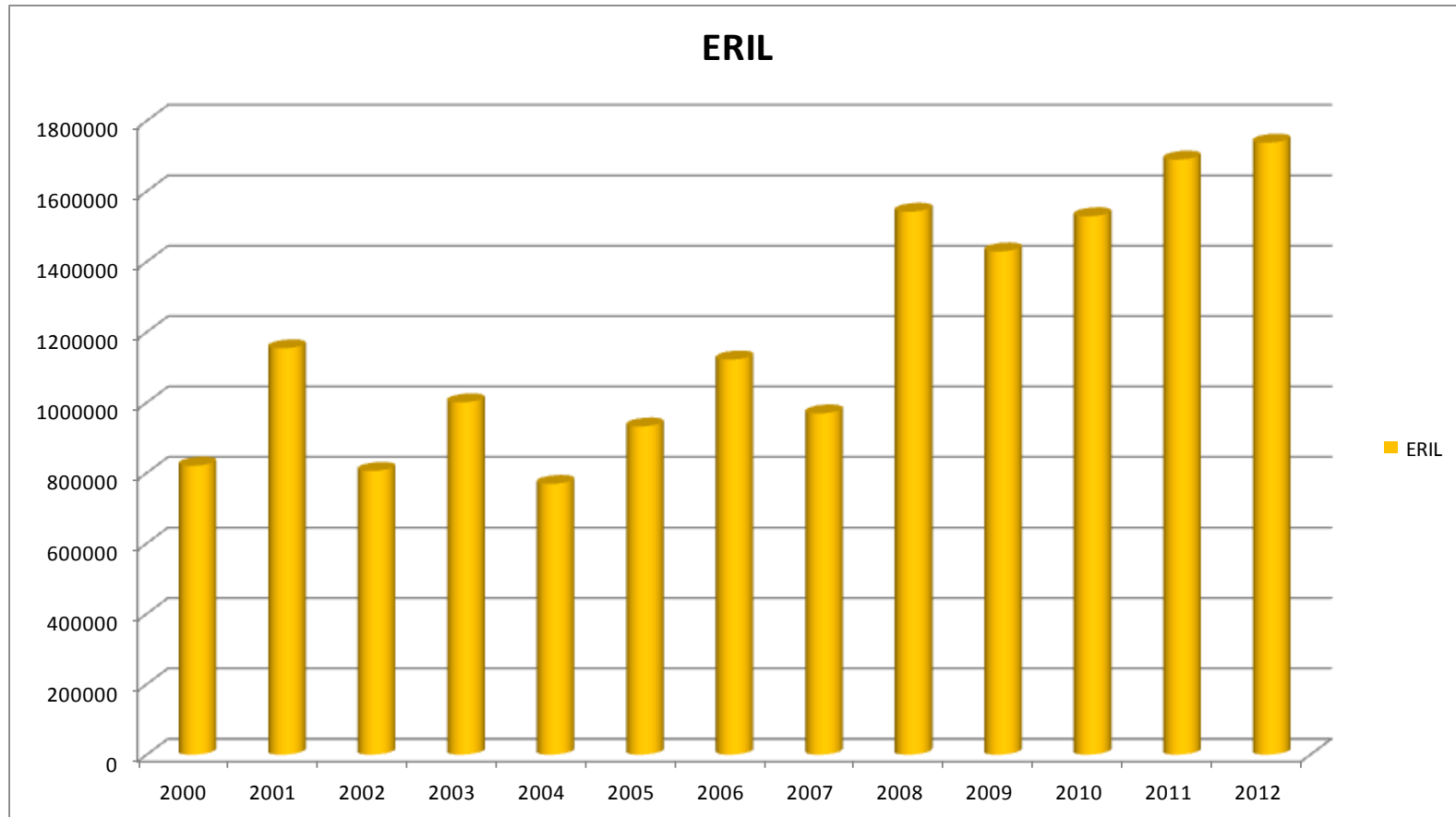
- Special machines
- Lines of assemblies
- Automation of process
- Specific tools
- Robotics



The ERIL company assures:

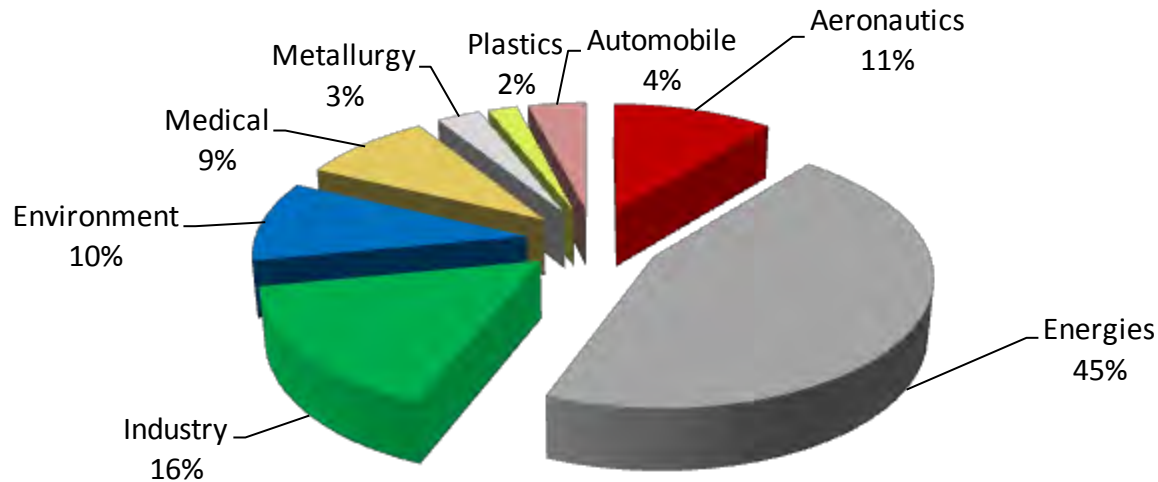
- Design
- Assembly
- Tries
- Installation
- Staff training

# Turnover (in euros)



# Sectors activities and types of customer

## ■ Breakdown of turnover 2012 by sector



## ■ Examples customers:

**AREVA**

**THALES**

**SAINT-GOBAIN**

**WEHR**

**FERRING**  
PHARMACEUTICALS

**aldes**

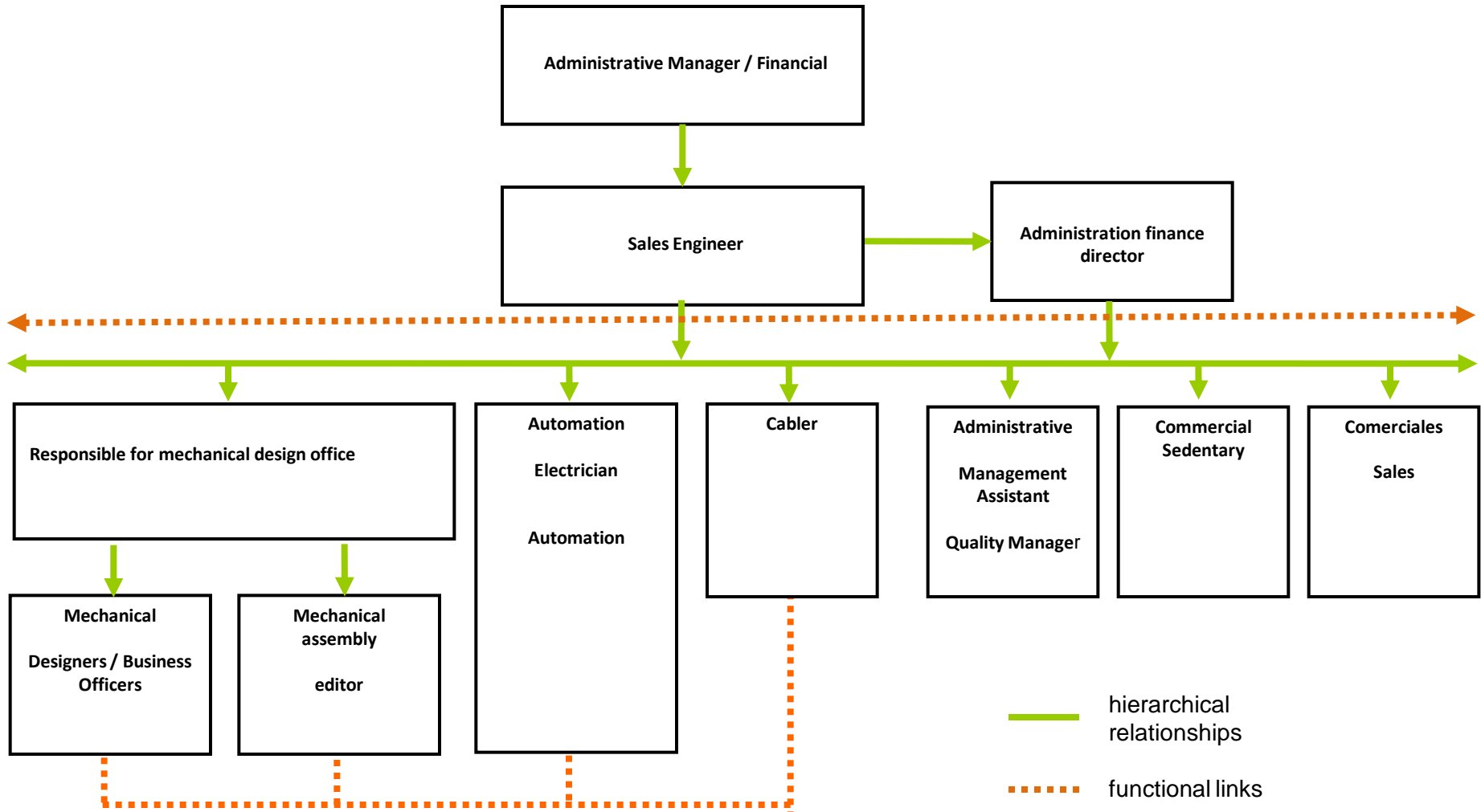
**atlantic**

**BIOMÉRIEUX**  
INDUSTRY

**LABORATOIRES**  
**BOIRON**

**ERIL**

# ORGANIZATION







Dismantling machine



Hydraulic, electric and pneumatic connector

# System for hydraulic test



Hydraulic (water and oil Fyrquel)

Specific integrations to 350 bar hydraulic control,  
pressure tested: 700 bar







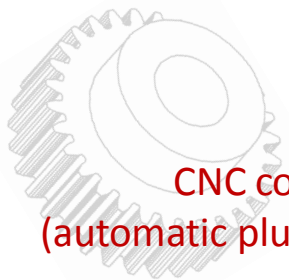
Brushless motor test bench



60-amp  
electroerosion box



Prototype test bench  
Load control and torque



CNC controller  
(automatic plugging machine)

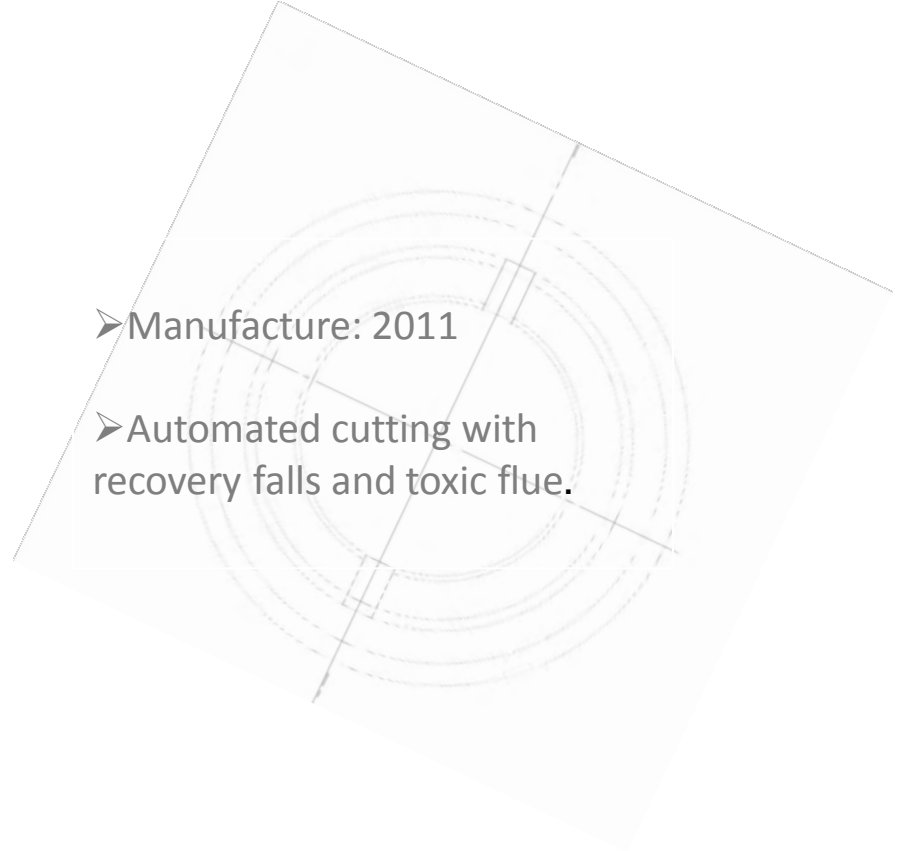




# Plasma cutting table



- Manufacture: 2011
- Automated cutting with recovery falls and toxic flue.



# Shading system



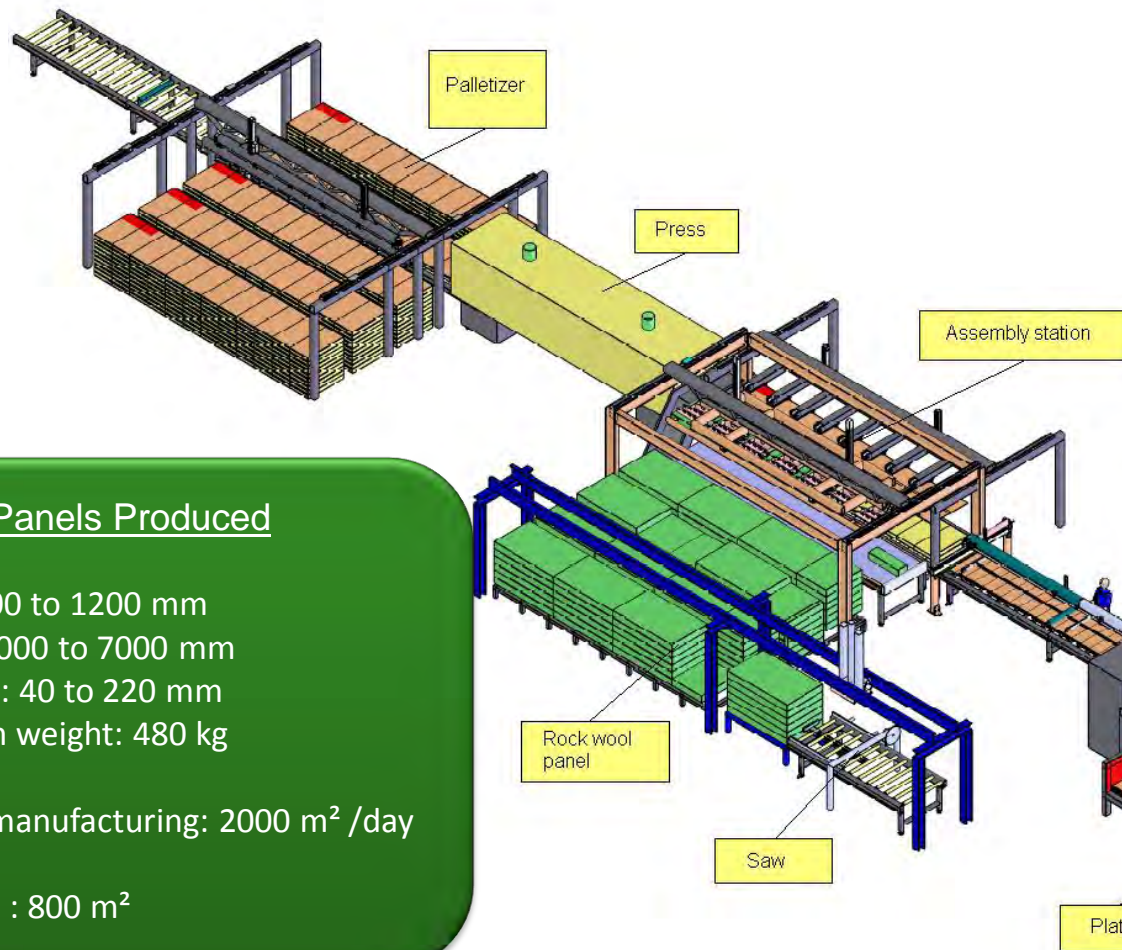
➤ Manufacture: 2009

➤ As part of a public contract.

➤ Work done in partnership with a metal company



# Assembly line



## Panels Produced

- Width: 300 to 1200 mm
- Length: 1000 to 7000 mm
- Thickness: 40 to 220 mm
- Maximum weight: 480 kg
- Possible manufacturing: 2000 m<sup>2</sup> /day
- Base area : 800 m<sup>2</sup>

Glue up to 1000m<sup>2</sup> / hour



# Dispensing machine 16 pumps



- Type: Mobile and fully automated.
- 16 pumps at different doses injected a medical product.
- These assays are pre-selected by the operator.



# Dosing machine



- Type: Mobile and fully automated.
- This machine allows the determination of a medical liquid.
- Present in a 25 liter, the liquid is injected using a peristaltic pump per milliliter.



# Air heater



➤ This air heater is positioned downstream from the air injection system for quicker drying sugar beads.

# Forging manipulator



Two masses 5Kg every 12 seconds



Punching cam

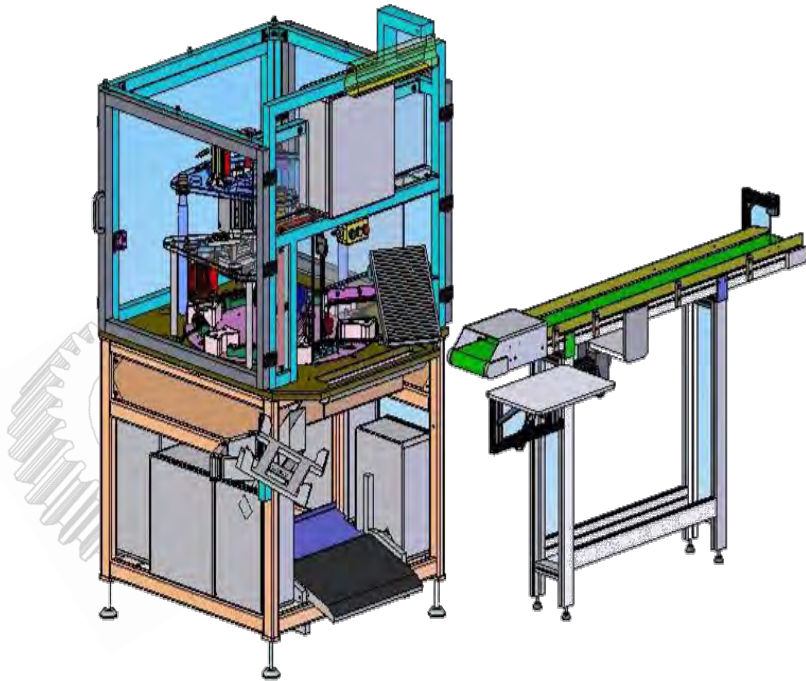


Splitting machine

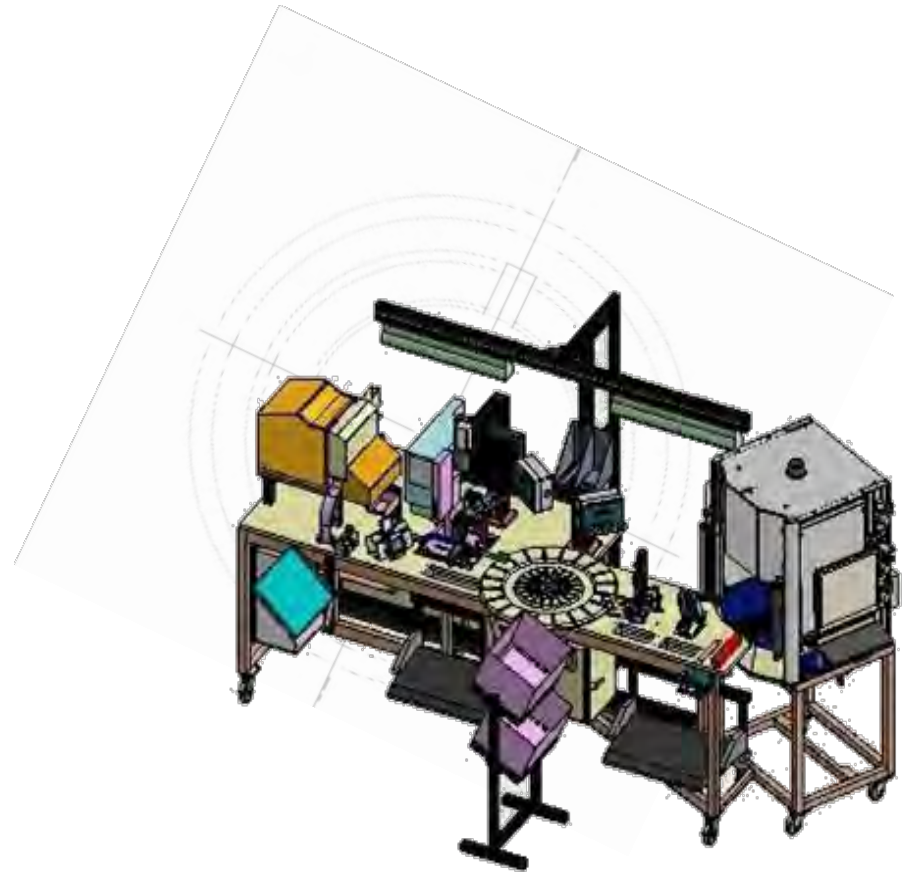


# Robotic cell





Assembly machine with rotary table



Ergonomic assembly station

3D design with Solidworks

# Strategies and values

- Purchase of premises in 2005
- Capea in 2007 (new qualipem)
- PME strategy 2008-2009
- ISO 9001 / 2008 in June 2011
- PME strategy 2012-2013 (export-oriented)
- certification ISO 140001 / 2004 to June 2013



**Quality :**



**Coming up:**

